

## IES Report

# ZipTwo® | 707 | Square 3536/30, Soft Wash | 90 CRI | SO

707-Z2-4-48-XX-XX-X-0-Z-SO-359-A3-X-BL-0

	2700K	3000K	3500K	4000K
Efficacy - Lumens per Watt	76	78	80	80
Total Lumens, 4' rail length (1219mm)	1956	2018	2059	2080
Lumens per foot (305mm)	489	504	515	520
Input Power (W), 4' rail length (1219mm)	26.0	26.0	26.0	26.0
Watts per foot (305mm)	6.5	6.5	6.5	6.5
CRI	95	95	95	95

Due to the large number of options in Vode's product offering, most Vode IES reports are factored reports prepared from source reports. Source reports are the IES test reports prepared for Vode by an NVLAP accredited photometric test laboratory. Factored reports are based on data from the Vode source reports.

If the data above is in black, it is directly from a Vode source report. If it is in grey, it is factored from Vode source reports. Reference details on Vode source reports can be found on the [IES File Finder](#) page on [vode.com](#).



8165 E Kaiser Blvd.  
Anaheim, CA 92808  
www.lightlaboratory.com

Report No: L092011502



**Report No:** L092011502

**Issue Date:** 9/23/2020

**Report Prepared For:** Vode Lighting  
21684 8th Street East, Suite 700, Sonoma, CA 95476

**Model Number:** 707-Z2-48-Z-SO-359-A3-BL

**Test:** Photometric/Colorimetric/Electrical Test/TM-30

**Standards Used:** Appropriate part or all test guidelines were used for test performed:

*IESNA LM79: 2008* Approved Methods for Electrical and Photometric Measurements of Solid-State Lighting Products

*ANSI NEMA ANSLG C78.377: 2008* Specification of the Chromaticity of Solid State Lighting Products

*ANSI C82.77:2002:* Harmonic Emission Limits-Related Quality Requirements for Lighting Equipment

**Description of Sample:** Client submitted the sample. Received in working and undamaged condition. No modifications were necessary.

**Special Test Condition:** Fixture is tested with no special conditions.

**Sample Arrival Date:** 9/18/20

**Date of Tests:** 9/21/20 - 9/23/20

**Seasoning of Sample:** No seasoning was performed in accordance with IESNA LM-79.

#### Equipment List

Equipment Used	Model No	Stock No	Calibration Due Date
Chroma Programmable AC Source	61604	PS-AC02	--
Yokogawa Digital Power Meter	WT210	MT-EL06-S4	1/9/21
BK PRECISION	1747	PS-DC04	1/10/21
Fluke Digital Thermometer	52K/J	MT-TP05	1/10/21
LLI Type C Goniophotometer System	RMG-C-MKII	CD-LL04-GC	--
LLI 2M Sphere	2MR97	CD-SN03-S2	--
LLI Spectroradiometer	SPR-3000	MT-SC01-S2	Before Use

### General Information

<b>Manufacturer:</b>	Vode Lighting
<b>Model Number:</b>	707-Z2-48-Z-SO-359-A3-BL
<b>Driver Model Number:</b>	MEAN WELL HLG-40H-36A

### Test Summary

<b>Total Lumens:</b>	2058.76
<b>Efficacy:</b>	79.18
<b>Color Redering Index:</b>	94.9
<b>Correlated Color Temperature:</b>	3304
<b>Input Voltage (VAC/60Hz):</b>	120.00
<b>Input Current (Amp):</b>	0.2182
<b>Input Power (W):</b>	26.00
<b>Input Power Factor:</b>	0.9927
<b>Current ATHD (%):</b>	9.1%

### Test Condition

<b>Ambient Temperature (°C):</b>	25.0
<b>Stabilization Time (Hours):</b>	0:40
<b>Total Operating Time (Hours):</b>	2:15

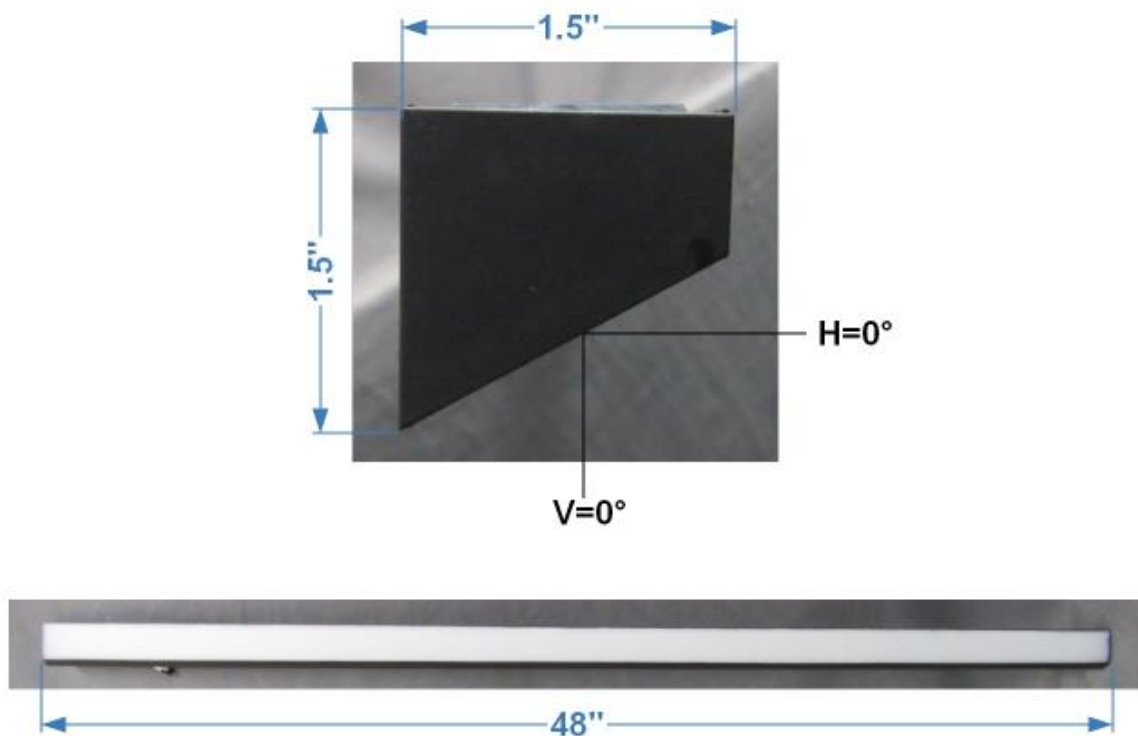
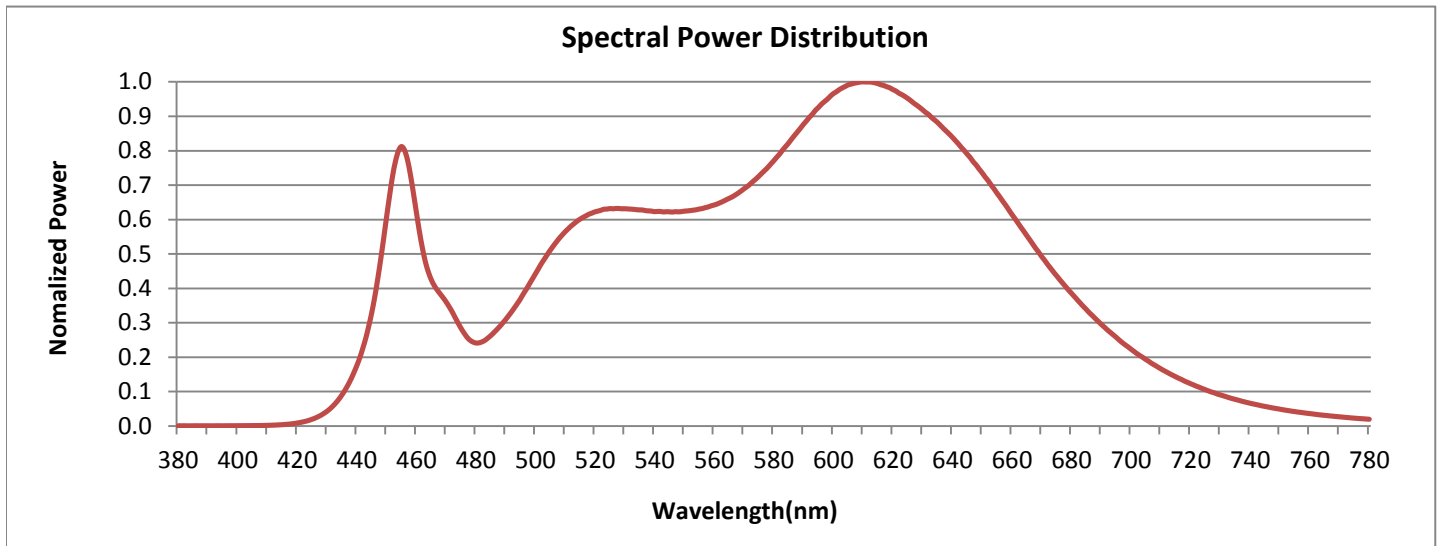


FIG. 1 LUMINAIRE

## Colorimetry Test Results

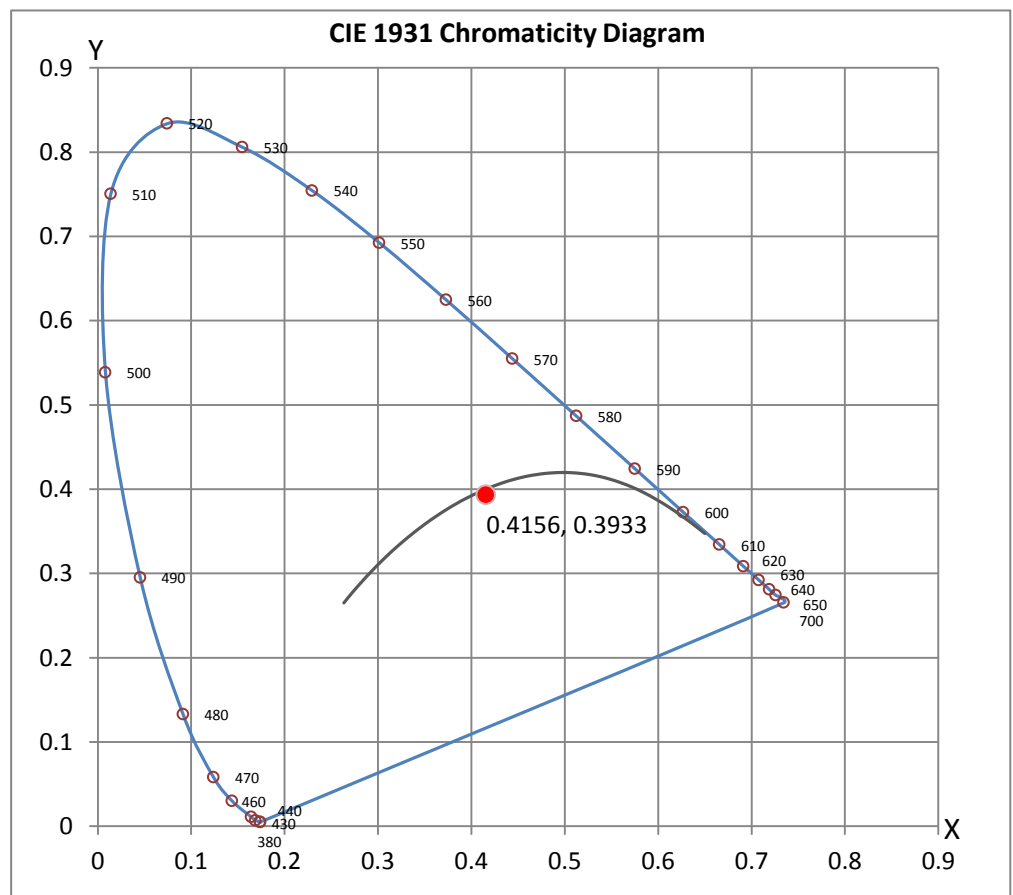


### CRI & CCT

x	0.4156
y	0.3933
u'	0.2413
v'	0.5139
CRI	94.90
CCT	3304
Duv	-0.00099

### R Values

R1	97.02
R2	99.21
R3	98.24
R4	97.92
R5	97.43
R6	95.61
R7	91.11
R8	82.28
R9	60.47
R10	98.28
R11	96.43
R12	79.73
R13	98.56
R14	99.49
R15	91.26





8165 E Kaiser Blvd.  
Anaheim, CA 92808  
www.lightlaboratory.com

Report No: L092011502



## Test Methods

### Photometric Measurements - Goniophotometer

A Custom Light Laboratory Type C Rotating Mirror Goniophotometer was used to measure candelas(intensity) at each angle of distribution as defined by IESNA for the appropriate fixture type.

Ambient temperature is set to 25°C and is measured from the center of the fixture, within 1ft from the outside of the fixture. Temperature is maintained at 25°C throughout the testing process and the sample is stabilized for at least 30mins and longer as necessary for the sample to achieve stabilization.

Electrical measurements are measured using the listed equipment.

### Spectral Measurements - Integrating Sphere

A Sensing Spectroradiometer SPR-3000, in conjunction with Light Laboratory 2 meter integrating sphere was used to measure chromaticity coordinates, correlated color temperature(CCT) and the color rendering index(CRI) for each sample.

Ambient temperature is set to 25°C and is measured from the center of the fixture, within 1ft from the outside of the fixture. Temperature is maintained at 25°C throughout the testing process and the sample is stabilized for at least 30mins and longer as necessary for the sample to achieve stabilization.

Electrical measurements are measured using the listed equipment.

### Disclaimers:

This report must not be used by the customer to claim product certification, approval or endorsement by NVLAP, NIST or any agency of Federal Government.

Report Prepared by : Keyur Patel

Test Report Reviewed by:

Steve Kang  
Quality Assurance

*\*Attached are photometric data reports. Total number of pages: 13*

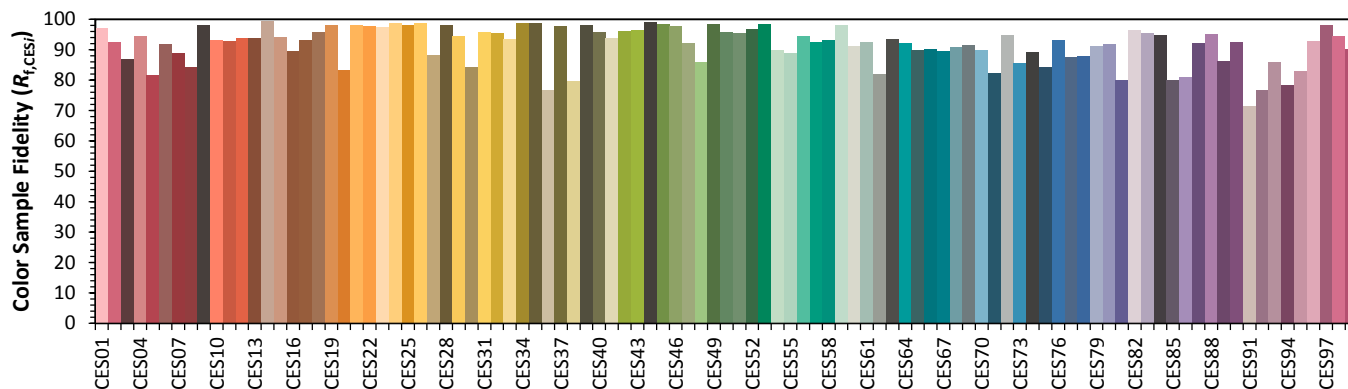
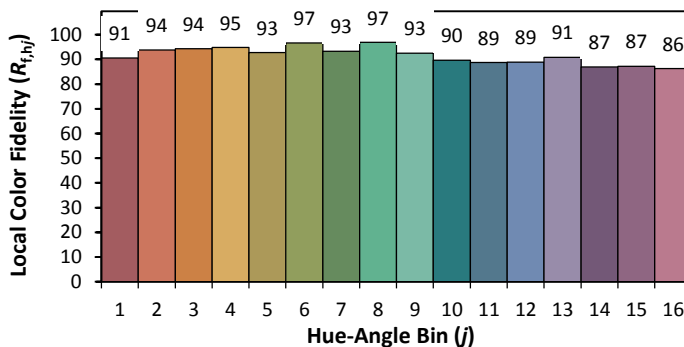
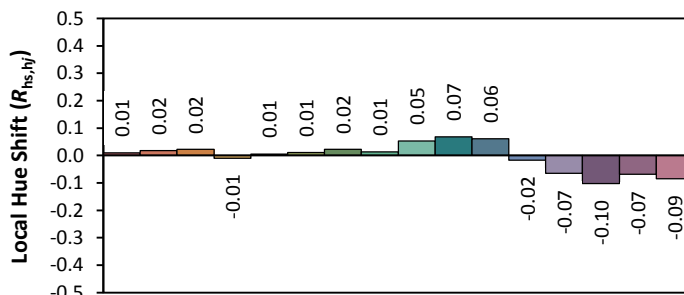
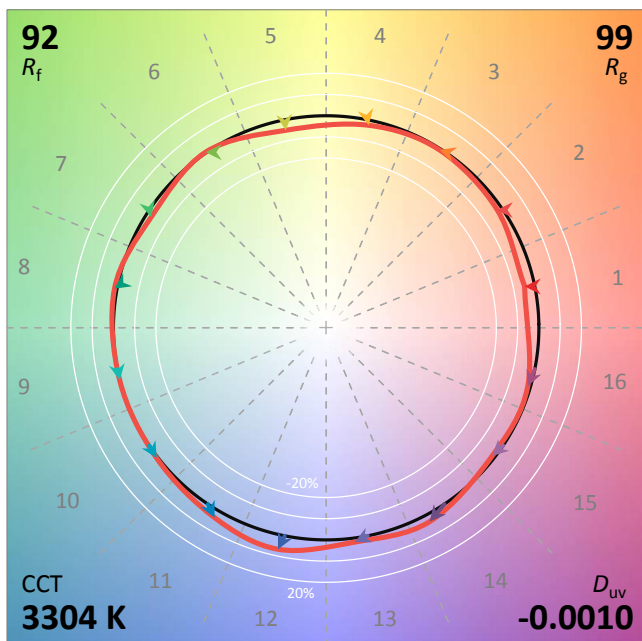
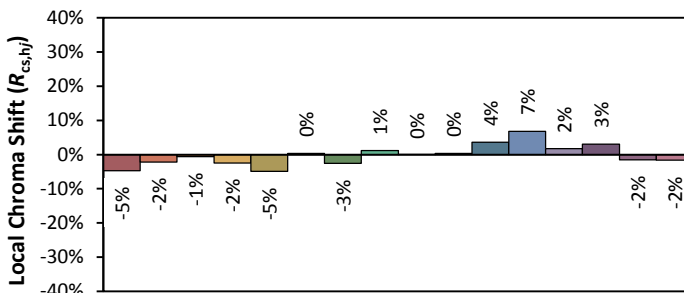
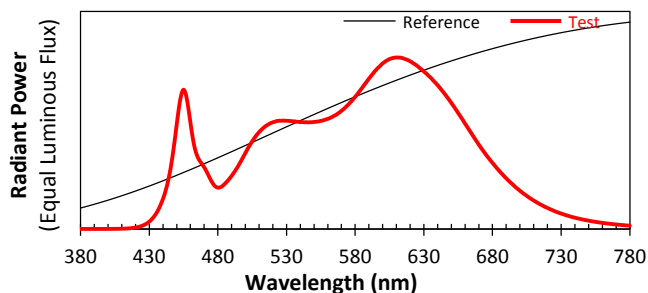
# ANSI/IES TM-30-18 Color Rendition Report

Source: LED Luminaire

Manufacturer: Vode Lighting

Date: 9/23/2020

Model: 707-Z2-48-Z-SO-359-A3-BL



Notes: This is a recommended method for displaying ANSI/IES TM-30-18 information.

$x$  0.4156  
 $y$  0.3933  
 $u'$  0.2413  
 $v'$  0.5139

CIE 13.3-1995  
(CRI)

$R_a$  95  
 $R_g$  60



8165 E. Kaiser Blvd. Anaheim, CA 92808  
www.lightlaboratory.com

## Photometric Test Report

### IES INDOOR REPORT

PHOTOMETRIC FILENAME : L092011502.IES

### DESCRIPTION INFORMATION (From Photometric File)

IESNA:LM-63-2002  
[TEST] L092011502  
[TESTLAB] LIGHT LABORATORY, INC. (www.lightlaboratory.com)  
[ISSUEDATE] 9/23/2020  
[MANUFAC] Vode Lighting  
[LUMCAT] 707-Z2-48-Z-SO-359-A3-BL  
[LUMINAIRE] ZipTwo LED, 48", 3500K, 90 CRI, zipper board,  
[MORE] square 3536/30, soft wash black lens, standard output  
[BALLASTCAT] MEAN WELL HLG-40H-36A  
[OTHER] INDICATING THE CANDELA VALUES ARE ABSOLUTE AND  
[MORE] SHOULD NOT BE FACTORED FOR DIFFERENT LAMP RATINGS.  
[INPUT] 120.0VAC, 26.0W  
[TEST PROCEDURE] IESNA:LM-79-08

### CHARACTERISTICS

Lumens Per Lamp	N.A. (absolute)
Total Lamp Lumens	N.A. (absolute)
Luminaire Lumens	2059
Total Luminaire Efficiency	N.A.
Luminaire Efficacy Rating (LER)	79
Total Luminaire Watts	26.03
Ballast Factor	1.00
CIE Type	Direct
Spacing Criterion (0-180)	1.70
Spacing Criterion (90-270)	1.24
Spacing Criterion (Diagonal)	1.38
Basic Luminous Shape	Rectangular w/Sides
Luminous Length (0-180)	0.13 ft
Luminous Width (90-270)	3.99 ft
Luminous Height	0.08 ft

### LUMINANCE DATA (cd/sq.m)

Angle In Degrees	Average 0-Deg	Average 45-Deg	Average 90-Deg
45	12171	11974	11565
55	11627	11422	11031
65	11062	10842	10373
75	10506	10204	9639
85	9928	9590	8792

**IES INDOOR REPORT**  
**PHOTOMETRIC FILENAME : L092011502.IES**

**CANDELA TABULATION**

	<u>0</u>	<u>5</u>	<u>10</u>	<u>15</u>	<u>20</u>	<u>25</u>	<u>30</u>	<u>35</u>	<u>40</u>	<u>45</u>
<b>0</b>	623.99	623.99	623.99	623.99	623.99	623.99	623.99	623.99	623.99	623.99
<b>5</b>	653.49	653.16	652.82	652.40	651.31	650.39	649.22	647.71	646.12	644.19
<b>10</b>	683.67	683.42	682.58	681.24	679.39	677.22	674.11	670.84	667.16	662.97
<b>15</b>	706.30	705.97	704.54	702.61	699.76	695.91	691.47	686.52	680.90	674.62
<b>20</b>	721.06	720.55	718.71	715.86	712.17	706.97	701.02	694.40	686.94	678.39
<b>25</b>	727.26	726.25	724.32	720.80	716.19	710.16	702.78	694.40	685.18	674.53
<b>30</b>	724.58	723.82	721.22	717.45	712.00	704.88	696.41	686.85	676.04	663.89
<b>35</b>	713.85	712.92	710.24	705.80	699.76	691.80	682.50	671.68	659.44	645.86
<b>40</b>	695.57	694.65	691.38	686.94	680.48	672.02	661.54	649.89	636.48	621.72
<b>45</b>	670.59	669.67	666.49	661.37	654.58	645.36	634.38	621.72	607.56	591.88
<b>50</b>	639.91	638.74	635.55	630.19	622.98	613.17	601.86	588.78	573.94	557.43
<b>55</b>	604.37	603.28	599.76	594.48	586.94	577.13	565.56	551.73	535.72	518.79
<b>60</b>	565.14	564.05	560.70	555.33	547.46	537.40	525.49	511.41	495.23	477.71
<b>65</b>	523.06	521.81	518.37	513.00	505.29	494.98	482.91	468.33	451.90	433.96
<b>70</b>	478.80	477.55	474.11	468.41	460.53	450.14	437.90	423.31	406.63	388.44
<b>75</b>	432.37	431.11	427.75	421.80	413.59	403.45	391.21	376.62	359.77	341.00
<b>80</b>	384.25	383.08	379.47	373.77	365.56	355.50	343.43	330.35	313.67	295.23
<b>85</b>	335.30	334.54	331.52	325.82	317.95	307.63	295.06	281.06	265.05	247.37
<b>90</b>	286.34	285.25	281.65	276.20	268.49	258.35	246.02	232.28	216.77	199.59
<b>95</b>	234.88	233.79	230.43	224.98	217.52	207.72	196.32	182.57	167.73	150.88
<b>100</b>	183.74	182.82	179.47	174.27	167.23	157.84	146.69	134.04	120.04	104.03
<b>105</b>	133.78	132.78	129.76	124.90	118.19	109.47	99.00	87.26	74.18	59.93
<b>110</b>	85.67	84.83	81.98	77.54	71.33	62.95	53.56	42.75	30.76	17.52
<b>115</b>	39.90	39.15	36.55	32.44	26.66	19.28	10.90	3.35	0.67	0.50
<b>120</b>	1.68	1.51	1.01	0.67	0.50	0.50	0.42	0.42	0.42	0.42
<b>125</b>	0.00	0.00	0.00	0.00	0.00	0.00	0.00	0.00	0.00	0.00
<b>130</b>	0.00	0.00	0.00	0.00	0.00	0.00	0.00	0.00	0.00	0.00
<b>135</b>	0.00	0.00	0.00	0.00	0.00	0.00	0.00	0.00	0.00	0.00
<b>140</b>	0.00	0.00	0.00	0.00	0.00	0.00	0.00	0.00	0.00	0.00
<b>145</b>	0.00	0.00	0.00	0.00	0.00	0.00	0.00	0.00	0.00	0.00
<b>150</b>	0.00	0.00	0.00	0.00	0.00	0.00	0.00	0.00	0.00	0.00
<b>155</b>	0.00	0.00	0.00	0.00	0.00	0.00	0.00	0.00	0.00	0.00
<b>160</b>	0.00	0.00	0.00	0.00	0.00	0.00	0.00	0.00	0.00	0.00
<b>165</b>	0.00	0.00	0.00	0.00	0.00	0.00	0.00	0.00	0.00	0.00
<b>170</b>	0.00	0.00	0.00	0.00	0.00	0.00	0.00	0.00	0.00	0.00
<b>175</b>	0.00	0.00	0.00	0.00	0.00	0.00	0.00	0.00	0.00	0.00
<b>180</b>	0.00	0.00	0.00	0.00	0.00	0.00	0.00	0.00	0.00	0.00

**Vert. Angles**      **Horizontal Angles**

	<u>50</u>	<u>55</u>	<u>60</u>	<u>65</u>	<u>70</u>	<u>75</u>	<u>80</u>	<u>85</u>	<u>90</u>	<u>95</u>
<b>0</b>	623.99	623.99	623.99	623.99	623.99	623.99	623.99	623.99	623.99	623.99
<b>5</b>	642.18	640.08	637.82	635.22	632.87	630.27	627.68	624.91	621.98	619.38
<b>10</b>	658.52	653.58	648.13	642.85	637.31	631.36	625.41	619.46	613.51	607.56
<b>15</b>	667.32	660.03	651.90	643.35	634.88	626.00	616.78	607.64	598.67	589.03
<b>20</b>	668.83	658.94	648.30	636.98	625.58	613.68	601.44	589.45	577.63	564.89
<b>25</b>	662.97	650.81	637.65	623.65	609.65	594.98	580.06	565.39	550.89	535.55
<b>30</b>	649.80	635.64	620.21	604.12	587.94	570.76	553.32	536.22	519.37	501.77
<b>35</b>	630.11	614.35	596.91	578.89	560.53	541.25	521.64	502.86	483.83	463.80
<b>40</b>	604.54	587.10	568.33	548.38	528.43	507.47	486.18	465.22	444.52	422.89
<b>45</b>	573.61	555.17	534.80	513.84	492.30	469.83	446.87	424.74	402.36	379.22
<b>50</b>	538.23	518.87	497.75	475.37	452.99	429.18	405.12	381.57	358.18	334.21
<b>55</b>	499.59	479.56	457.34	434.21	410.82	386.93	361.20	337.98	313.92	288.86
<b>60</b>	457.93	437.14	414.68	390.79	366.81	342.00	317.86	292.88	267.32	242.00



**IES INDOOR REPORT**  
**PHOTOMETRIC FILENAME : L092011502.IES**

**CANDELA TABULATION - (Cont.)**

65	413.76	392.05	369.75	343.68	323.48	297.58	271.51	246.28	220.54	194.98
70	368.74	343.26	325.07	301.43	276.12	250.22	224.98	199.75	174.27	149.96
75	323.31	301.35	278.13	253.74	229.51	203.86	178.96	154.32	129.34	105.79
80	275.53	253.90	230.94	207.05	183.07	158.51	134.20	109.47	85.50	63.87
85	227.67	206.54	184.16	161.11	138.14	114.25	90.36	70.08	45.43	23.81
90	179.89	160.19	138.73	116.60	94.72	72.17	49.54	27.75	6.96	0.42
95	132.53	113.83	93.63	72.84	52.31	31.02	9.56	0.42	0.42	0.42
100	87.01	69.49	50.63	31.10	11.90	0.59	0.42	0.42	0.42	0.42
105	43.59	27.16	9.72	0.75	0.42	0.42	0.42	0.42	0.42	0.42
110	4.28	0.50	0.42	0.42	0.42	0.42	0.42	0.42	0.42	0.42
115	0.42	0.42	0.42	0.42	0.42	0.42	0.42	0.42	0.42	0.42
120	0.42	0.42	0.42	0.42	0.42	0.42	0.42	0.42	0.42	0.42
125	0.00	0.00	0.00	0.00	0.00	0.00	0.00	0.00	0.00	0.00
130	0.00	0.00	0.00	0.00	0.00	0.00	0.00	0.00	0.00	0.00
135	0.00	0.00	0.00	0.00	0.00	0.00	0.00	0.00	0.00	0.00
140	0.00	0.00	0.00	0.00	0.00	0.00	0.00	0.00	0.00	0.00
145	0.00	0.00	0.00	0.00	0.00	0.00	0.00	0.00	0.00	0.00
150	0.00	0.00	0.00	0.00	0.00	0.00	0.00	0.00	0.00	0.00
155	0.00	0.00	0.00	0.00	0.00	0.00	0.00	0.00	0.00	0.00
160	0.00	0.00	0.00	0.00	0.00	0.00	0.00	0.00	0.00	0.00
165	0.00	0.00	0.00	0.00	0.00	0.00	0.00	0.00	0.00	0.00
170	0.00	0.00	0.00	0.00	0.00	0.00	0.00	0.00	0.00	0.00
175	0.00	0.00	0.00	0.00	0.00	0.00	0.00	0.00	0.00	0.00
180	0.00	0.00	0.00	0.00	0.00	0.00	0.00	0.00	0.00	0.00

**Vert. Angles**      **Horizontal Angles**

	<u>100</u>	<u>105</u>	<u>110</u>	<u>115</u>	<u>120</u>	<u>125</u>	<u>130</u>	<u>135</u>	<u>140</u>	<u>145</u>
0	623.99	623.99	623.99	623.99	623.99	623.99	623.99	623.99	623.99	623.99
5	616.69	613.76	611.41	609.07	606.64	604.37	602.28	600.18	598.50	596.83
10	601.77	595.65	590.12	584.67	579.14	574.45	569.75	565.48	561.71	558.02
15	580.23	571.35	562.71	554.66	546.62	539.07	532.45	525.91	520.13	514.93
20	553.24	541.50	530.44	519.79	509.90	500.26	491.04	482.58	475.28	468.33
25	521.05	507.22	493.72	481.07	468.58	456.93	445.94	435.63	426.58	418.28
30	485.34	468.83	453.49	438.57	424.15	410.91	398.08	386.43	376.12	366.40
35	445.36	427.08	409.98	393.47	377.38	362.54	348.37	335.72	324.15	313.42
40	402.86	382.91	364.22	346.53	329.26	313.17	297.91	283.91	271.42	259.94
45	357.93	336.81	317.19	298.16	279.64	262.62	246.53	231.61	218.61	206.46
50	311.91	289.70	269.08	249.29	230.01	211.91	195.56	180.22	166.98	154.82
55	265.89	243.01	221.72	201.43	181.65	163.37	146.86	131.35	117.77	105.20
60	218.61	195.39	173.26	153.06	133.87	115.93	99.42	83.57	70.33	57.84
65	171.67	149.46	127.50	106.79	87.76	70.50	53.73	38.48	25.15	13.08
70	126.41	104.53	82.99	63.54	43.92	26.66	11.15	2.01	1.68	1.84
75	83.49	61.95	40.99	21.79	4.86	0.00	0.00	0.00	0.00	0.00
80	42.50	21.29	4.02	0.92	1.01	0.00	0.00	0.00	0.00	0.00
85	5.03	0.67	0.67	0.84	0.92	0.00	0.00	0.00	0.00	0.00
90	0.42	0.42	0.42	0.42	0.42	0.42	0.42	0.42	0.42	0.42
95	0.42	0.42	0.42	0.42	0.42	0.42	0.42	0.42	0.42	0.42
100	0.42	0.42	0.42	0.42	0.42	0.42	0.42	0.42	0.42	0.42
105	0.42	0.42	0.42	0.42	0.42	0.42	0.42	0.42	0.42	0.42
110	0.42	0.42	0.42	0.42	0.42	0.42	0.42	0.42	0.42	0.42
115	0.42	0.42	0.42	0.42	0.42	0.42	0.42	0.42	0.42	0.42
120	0.42	0.42	0.42	0.42	0.42	0.42	0.42	0.42	0.42	0.42
125	0.00	0.00	0.00	0.00	0.00	0.00	0.00	0.00	0.00	0.00
130	0.00	0.00	0.00	0.00	0.00	0.00	0.00	0.00	0.00	0.00
135	0.00	0.00	0.00	0.00	0.00	0.00	0.00	0.00	0.00	0.00

**IES INDOOR REPORT**  
**PHOTOMETRIC FILENAME : L092011502.IES**

**CANDELA TABULATION - (Cont.)**

<b>140</b>	0.00	0.00	0.00	0.00	0.00	0.00	0.00	0.00	0.00	0.00
<b>145</b>	0.00	0.00	0.00	0.00	0.00	0.00	0.00	0.00	0.00	0.00
<b>150</b>	0.00	0.00	0.00	0.00	0.00	0.00	0.00	0.00	0.00	0.00
<b>155</b>	0.00	0.00	0.00	0.00	0.00	0.00	0.00	0.00	0.00	0.00
<b>160</b>	0.00	0.00	0.00	0.00	0.00	0.00	0.00	0.00	0.00	0.00
<b>165</b>	0.00	0.00	0.00	0.00	0.00	0.00	0.00	0.00	0.00	0.00
<b>170</b>	0.00	0.00	0.00	0.00	0.00	0.00	0.00	0.00	0.00	0.00
<b>175</b>	0.00	0.00	0.00	0.00	0.00	0.00	0.00	0.00	0.00	0.00
<b>180</b>	0.00	0.00	0.00	0.00	0.00	0.00	0.00	0.00	0.00	0.00

**Vert.  
Angles**

**Horizontal Angles**

	<b><u>150</u></b>	<b><u>155</u></b>	<b><u>160</u></b>	<b><u>165</u></b>	<b><u>170</u></b>	<b><u>175</u></b>	<b><u>180</u></b>
<b>0</b>	623.99	623.99	623.99	623.99	623.99	623.99	623.99
<b>5</b>	595.40	594.23	593.22	592.30	591.80	591.46	591.30
<b>10</b>	555.00	552.40	550.14	548.46	547.20	546.53	546.20
<b>15</b>	510.49	506.63	503.28	500.60	498.84	497.75	497.24
<b>20</b>	462.12	457.18	452.73	449.47	447.12	445.61	445.11
<b>25</b>	411.07	404.95	399.67	395.65	392.80	391.21	390.45
<b>30</b>	358.10	351.14	345.10	340.75	337.56	335.55	334.96
<b>35</b>	304.20	296.49	289.95	284.83	281.31	279.05	278.30
<b>40</b>	249.96	241.75	234.62	229.26	225.49	223.06	222.30
<b>45</b>	196.07	187.43	179.97	174.35	170.50	168.24	167.48
<b>50</b>	144.09	135.21	127.66	121.96	117.86	115.34	114.50
<b>55</b>	94.30	85.42	78.29	72.42	68.40	65.80	65.05
<b>60</b>	47.19	38.31	30.85	24.98	20.96	18.61	17.77
<b>65</b>	4.61	2.26	2.35	2.35	2.35	2.35	2.35
<b>70</b>	2.01	2.01	2.18	2.18	2.26	2.35	2.35
<b>75</b>	0.00	0.00	0.00	0.00	0.00	0.00	0.00
<b>80</b>	0.00	0.00	0.00	0.00	0.00	0.00	0.00
<b>85</b>	0.00	0.00	0.00	0.00	0.00	0.00	0.00
<b>90</b>	0.42	0.42	0.42	0.42	0.42	0.42	0.42
<b>95</b>	0.42	0.42	0.42	0.42	0.42	0.42	0.42
<b>100</b>	0.42	0.42	0.42	0.42	0.42	0.42	0.42
<b>105</b>	0.42	0.42	0.42	0.42	0.42	0.42	0.42
<b>110</b>	0.42	0.42	0.42	0.42	0.42	0.42	0.42
<b>115</b>	0.42	0.42	0.42	0.42	0.42	0.42	0.42
<b>120</b>	0.42	0.42	0.42	0.42	0.42	0.42	0.42
<b>125</b>	0.00	0.00	0.00	0.00	0.00	0.00	0.00
<b>130</b>	0.00	0.00	0.00	0.00	0.00	0.00	0.00
<b>135</b>	0.00	0.00	0.00	0.00	0.00	0.00	0.00
<b>140</b>	0.00	0.00	0.00	0.00	0.00	0.00	0.00
<b>145</b>	0.00	0.00	0.00	0.00	0.00	0.00	0.00
<b>150</b>	0.00	0.00	0.00	0.00	0.00	0.00	0.00
<b>155</b>	0.00	0.00	0.00	0.00	0.00	0.00	0.00
<b>160</b>	0.00	0.00	0.00	0.00	0.00	0.00	0.00
<b>165</b>	0.00	0.00	0.00	0.00	0.00	0.00	0.00
<b>170</b>	0.00	0.00	0.00	0.00	0.00	0.00	0.00
<b>175</b>	0.00	0.00	0.00	0.00	0.00	0.00	0.00
<b>180</b>	0.00	0.00	0.00	0.00	0.00	0.00	0.00

**IES INDOOR REPORT**  
**PHOTOMETRIC FILENAME : L092011502.IES**

**ZONAL LUMEN SUMMARY**

Zone	Lumens	%Lamp	%Fixt
0-20	228.45	N.A.	11.10
0-30	484.12	N.A.	23.50
0-40	790.74	N.A.	38.40
0-60	1398.3	N.A.	67.90
0-80	1817.71	N.A.	88.30
0-90	1943.83	N.A.	94.40
10-90	1884.7	N.A.	91.50
20-40	562.29	N.A.	27.30
20-50	879.54	N.A.	42.70
40-70	845.47	N.A.	41.10
60-80	419.42	N.A.	20.40
70-80	181.50	N.A.	8.80
80-90	126.12	N.A.	6.10
90-110	107.84	N.A.	5.20
90-120	114.82	N.A.	5.60
90-130	114.93	N.A.	5.60
90-150	114.93	N.A.	5.60
90-180	114.93	N.A.	5.60
110-180	7.09	N.A.	0.30
0-180	2058.76	N.A.	100.00

Total Luminaire Efficiency = N.A. %

**ZONAL LUMEN SUMMARY**

Zone	Lumens
0-10	59.13
10-20	169.32
20-30	255.67
30-40	306.62
40-50	317.24
50-60	290.31
60-70	237.92
70-80	181.50
80-90	126.12
90-100	74.80
100-110	33.05
110-120	6.97
120-130	0.11
130-140	0.00
140-150	0.00
150-160	0.00
160-170	0.00
170-180	0.00

IES INDOOR REPORT  
 PHOTOMETRIC FILENAME : L092011502.IES

COEFFICIENTS OF UTILIZATION - ZONAL CAVITY METHOD

Effective Floor Cavity Reflectance 0.20

RC	80				70				50			30			10			0
RW	70	50	30	10	70	50	30	10	50	30	10	50	30	10	50	30	10	0
0	118	118	118	118	114	114	114	114	108	108	108	102	102	102	97	97	97	94
1	105	100	95	90	102	97	92	88	92	88	84	87	84	81	82	80	77	75
2	95	86	79	72	92	84	77	71	79	73	68	75	70	66	71	67	64	61
3	87	75	66	59	84	73	65	59	69	62	57	66	60	55	62	58	53	51
4	79	66	57	50	76	65	56	49	61	54	48	58	52	47	56	50	46	43
5	73	59	50	43	70	58	49	42	55	47	41	52	46	41	50	44	40	37
6	67	53	44	37	65	52	43	37	50	42	36	47	41	35	45	39	35	32
7	62	48	39	33	60	47	39	33	45	38	32	43	36	31	41	35	31	29
8	58	44	35	29	56	43	35	29	41	34	29	40	33	28	38	32	28	26
9	54	40	32	26	52	40	32	26	38	31	26	36	30	25	35	29	25	23
10	51	37	29	24	49	37	29	24	35	28	23	34	27	23	33	27	23	21

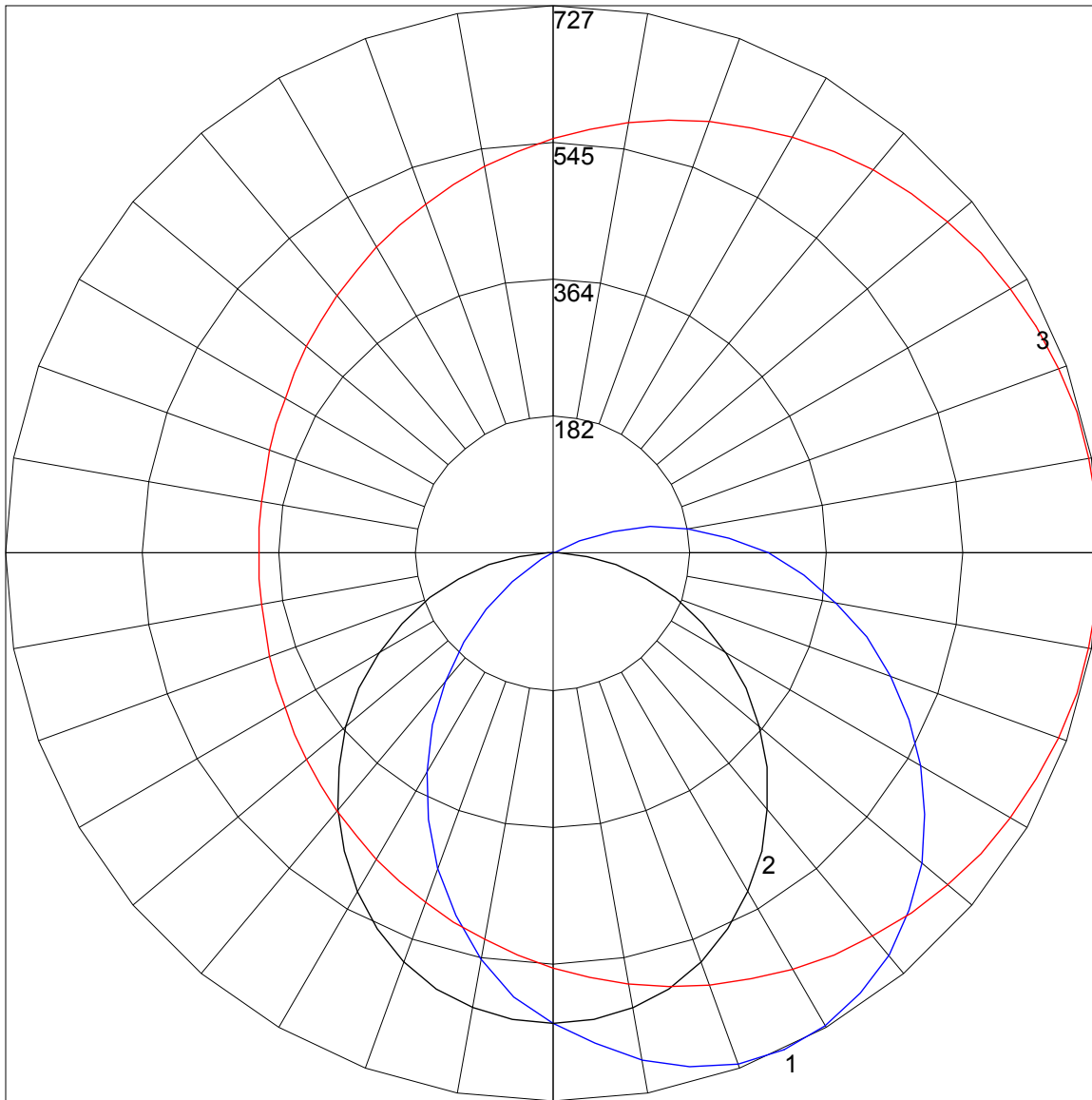
**IES INDOOR REPORT**  
**PHOTOMETRIC FILENAME : L092011502.IES**

**UGR TABLE - CORRECTED**

Reflectances											
Ceiling Cavity	70	70	50	50	30	70	70	50	50	30	
Walls	50	30	50	30	30	50	30	50	30	30	
Floor Cavity	20	20	20	20	20	20	20	20	20	20	
Room Size		UGR Viewed Crosswise					UGR Viewed Endwise				
X=2H	Y=2H	23.4	25.0	23.9	25.4	25.9	17.8	19.4	18.3	19.8	20.3
	3H	26.3	27.7	26.8	28.2	28.7	19.3	20.7	19.8	21.2	21.7
	4H	27.7	29.1	28.2	29.5	30.1	19.9	21.2	20.3	21.7	22.2
	6H	29.2	30.5	29.7	31.0	31.5	20.2	21.5	20.7	21.9	22.5
	8H	30.0	31.2	30.5	31.7	32.3	20.3	21.5	20.8	22.0	22.6
	12H	30.9	32.0	31.4	32.5	33.1	20.4	21.5	20.9	22.0	22.6
4H	2H	23.8	25.2	24.3	25.6	26.1	19.0	20.3	19.5	20.8	21.3
	3H	26.9	28.1	27.4	28.6	29.1	20.7	21.9	21.2	22.4	23.0
	4H	28.5	29.6	29.0	30.1	30.6	21.4	22.5	22.0	23.0	23.6
	6H	30.2	31.1	30.7	31.7	32.3	21.9	22.9	22.5	23.4	24.0
	8H	31.1	32.0	31.6	32.5	33.1	22.1	23.0	22.6	23.5	24.1
	12H	32.1	32.9	32.6	33.4	34.0	22.2	23.0	22.7	23.5	24.1
8H	4H	28.7	29.6	29.2	30.1	30.7	22.4	23.3	23.0	23.8	24.4
	6H	30.6	31.3	31.1	31.9	32.5	23.1	23.9	23.7	24.5	25.1
	8H	31.6	32.2	32.1	32.8	33.5	23.4	24.1	24.0	24.7	25.3
	12H	32.7	33.3	33.3	33.9	34.6	23.6	24.2	24.2	24.8	25.5
12H	4H	28.7	29.5	29.3	30.1	30.7	22.7	23.5	23.3	24.1	24.7
	6H	30.6	31.3	31.2	31.8	32.5	23.6	24.2	24.2	24.8	25.5
	8H	31.7	32.3	32.3	32.9	33.5	23.9	24.5	24.5	25.1	25.8

Maximum UGR = 34.6

POLAR GRAPH



Maximum Candela = 727.26 Located At Horizontal Angle = 0, Vertical Angle = 25

# 1 - Vertical Plane Through Horizontal Angles (0 - 180) (Through Max. Cd.)

# 2 - Vertical Plane Through Horizontal Angles (90 - 270)

# 3 - Horizontal Cone Through Vertical Angle (25) (Through Max. Cd.)